

## BENCHTOP LIQUID SPECTROPHOTOMETERS

- According to CIE 15, ISO 7724/1, ASTM E1164, DIN 5033 Teil7, JIS Z8722, ASTM D1209, ASTM D5386, ASTM D6045, ASTM D6166
- Suitable for color measurement of liquid chemicals, coatings, pharmaceuticals, cosmetics, petroleum, industrial oil and other liquids
- The measuring wavelength range is extended to 360 nm~780 nm
- More than 30 color indicators, including pt-co, Gardner, Saybolt, ChP, USP, EP
- 7-inch capacitive touch screen with 180° rotatable display
- Supports online software update and addition of measurement indicators
- The minimum liquid addition is reduced to 1ml
- Intelligent zero calibration ensures accurate measurement
- Supports stand-alone testing or online testing via software
- Can store more than 100,000 pieces of data, PDF data can be exported via USB flash drive

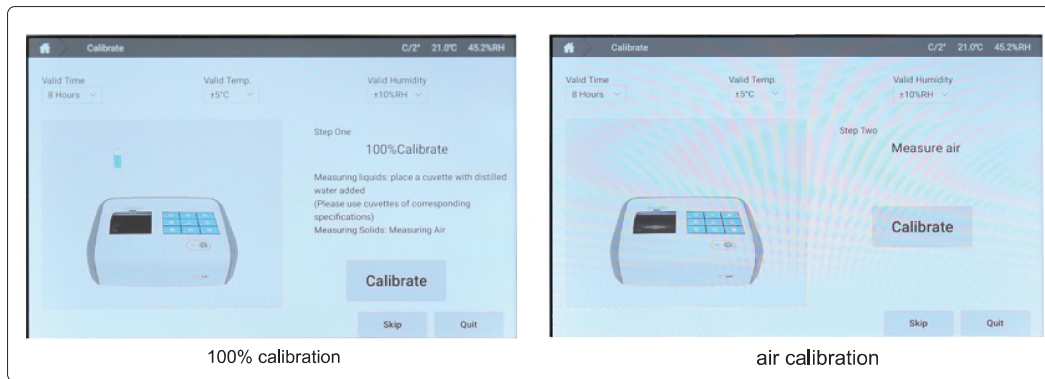


### SPECIFICATION

Code	5709-LS01	5709-LS02
Heating function	/	room temperature to 90°C
Repeatability *	transmittance: standard deviation $\leq 0.08\%$ colorimetric value: standard deviation $\Delta E^*ab \leq 0.015$ , colorimetric extreme value $\leq 0.04$	transmittance: standard deviation $\leq 0.08\%$ colorimetric value: standard deviation $\Delta E^*ab \leq 0.01$ , colorimetric extreme value $\leq 0.03$
Inter-instrument error	$\Delta E^*ab < 0.25$	$\Delta E^*ab < 0.2$
Optical geometry	d/0 (diffused illumination/0° direction reception)	
Integrating sphere size	Ø40mm	
Lighting source	full-band balanced LED	
Sensor	dual-row high-precision sensor	
Calibration mode	zero calibration, 100% calibration, custom curve calibration	
Display accuracy	0.01	
Wavelength range	360nm~780nm	
Wavelength interval	10nm	
Half-bandwidth	5nm	
Reflectance range	0~200%	
Reflectance resolution	0.01%	
Observer angle	2°/10°	
Illumination	A, B, C, D50, D55, D65, D75, F1, F2, F3, F4, F5, F6, F7, F8, F9, F10, F11, F12, CWF, U30, U35, DLF, NBF, TL83, TL84, ID50, ID65, LED-B1, LED-B2, LED-B3, LED-B4, LED-B5, LED-BH1, LED-RGB1, LED-V1, LED-V4	
Colorimetric index	CIE-Lab, CIE-LCh, CIE-Luv, XYZ, Yxy, transmissivity, Hunter Lab Munsell, MI, CMYK	
Color difference formula	$\Delta E^*ab$ , $\Delta E^*ch$ , $\Delta E^*uv$ , $\Delta E^*cmc$ (2: 1), $\Delta E^*cmc$ (1: 1), $\Delta E^*94$ , $\Delta E^*02$	
Display	pharmacopoeia color number, transmission diagram/data, sample chromaticity value, color difference value/diagram, pass/fail, color deviation, color simulation, historical color simulation, manual input of standard sample, test report	
Other indicators	pharmacopoeia (ChP, EP, USP), WI (ASTM E313-20, ASTM E313-73, CIE, ISO2470/R457, Hunter, Taube Berger Stensby), YI (ASTM D1925, ASTM E313-20, ASTM E313-73), Tint (ASTM E313-20), Allochromic index Milm, APHA, Hazen, Pt-Co (Platinum-cobalt index), Gardner(Gardner index), Iron cobalt index, Saybolt (Seibert index), ASTM Color, EBC (Beer Color), ICUMSA Color (Sugar Chroma)	
Measuring time	<1.5s	
Data Storage	100000pcs	
Audit trail	FDA, CFDA	
Power supply	100~240V, 50/60Hz	
Dimension (L×W×H)	390×260×140mm	
Net weight	4kg	

\* After calibration, measure the standard deviation and extreme value for air 30 times at 5-second intervals

## calibration interface



### STANDARD DELIVERY

<b>Main unit</b>	1 pc
<b>Glass cuvette (10mm)</b>	1 set
<b>Glass cuvette (50mm)</b>	1 set
<b>10mm cell holder</b>	1 pc
<b>50mm cell holder</b>	1 pc
<b>Power supply</b>	1 pc
<b>Software</b>	1 set



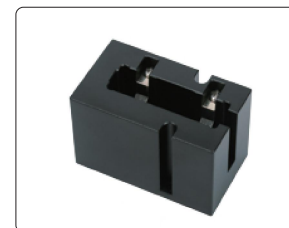
glass cuvettes (included)

### OPTIONAL ACCESSORY

<b>Glass cuvette (33mm)</b>	<b>5709-LS-BSM33</b>
<b>Glass cuvette (100mm)</b>	<b>5709-LS-BSM100</b>



10mm cell holder (included)



50mm cell holder (included)